



# MoniServ, Inc.

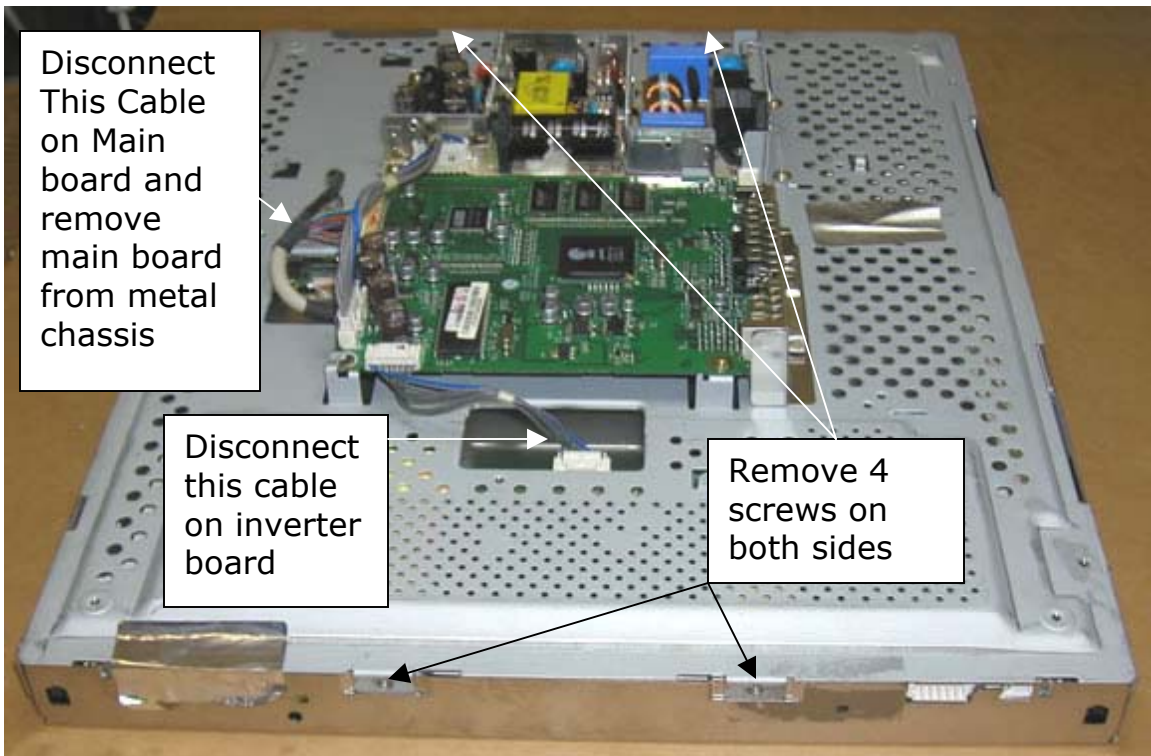
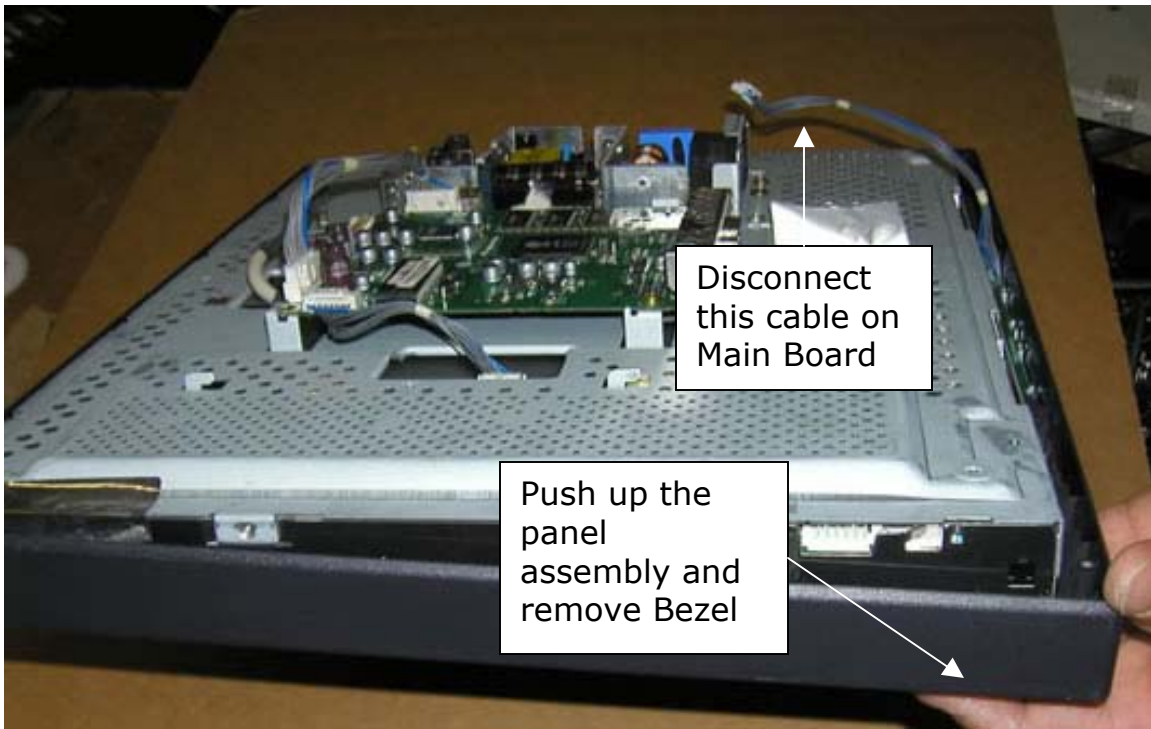
<http://www.moniserv.com>

<http://www.lcdpart.com>

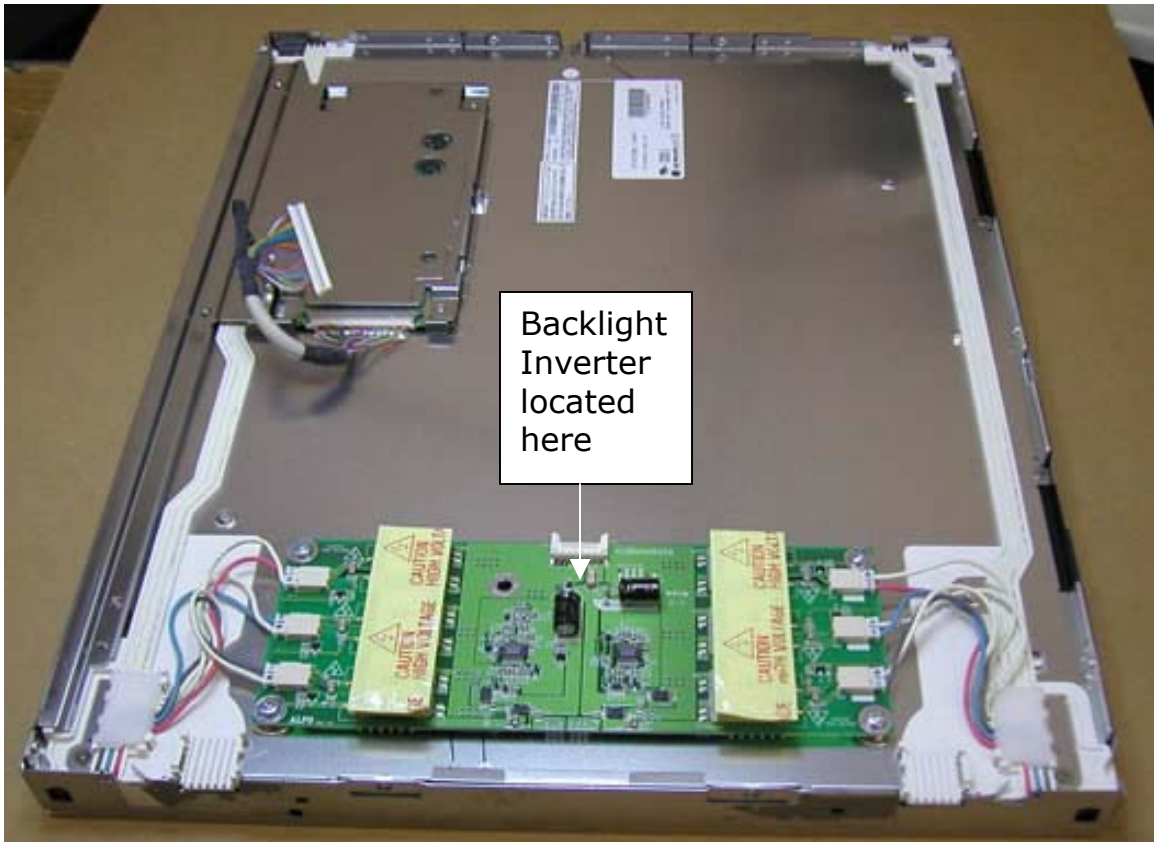
<http://www.monitoronsale.com>

## Remove and installation Procedure for Dell 1800FP





Remove Metal Chassis assembly



Disconnected 6 backlight connectors. Replace with MoniServ 6633TZA015AMSS. Reinstall all component, metal chassis, circuit board and cover back. Dell 1800FP should work now.