

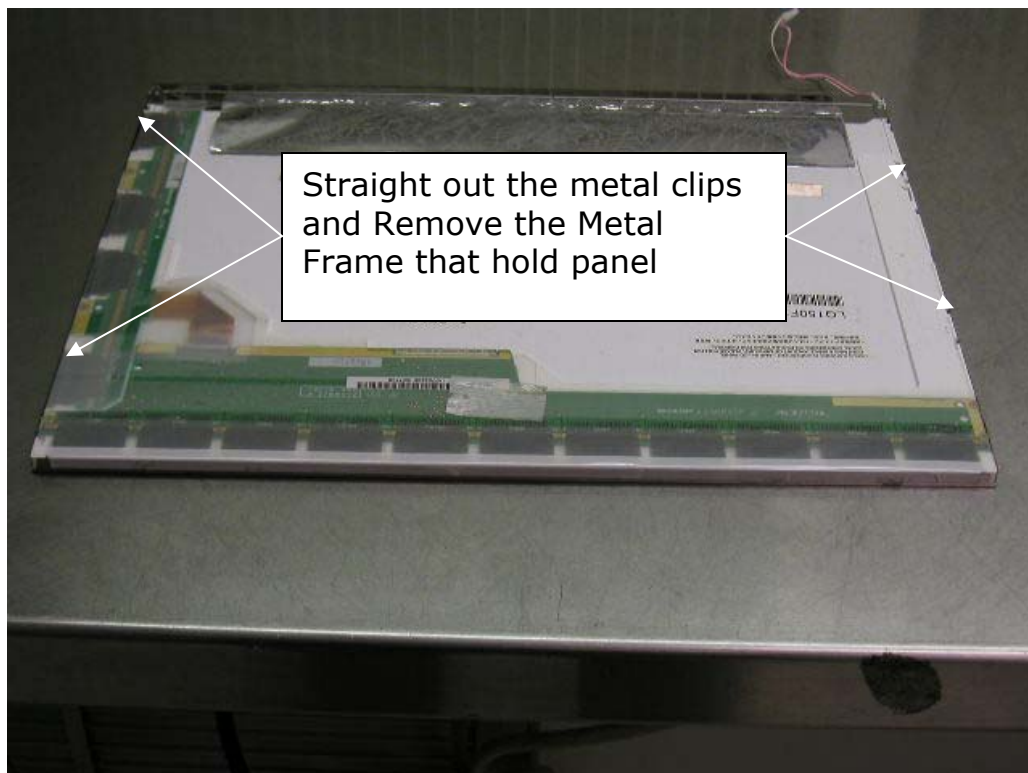
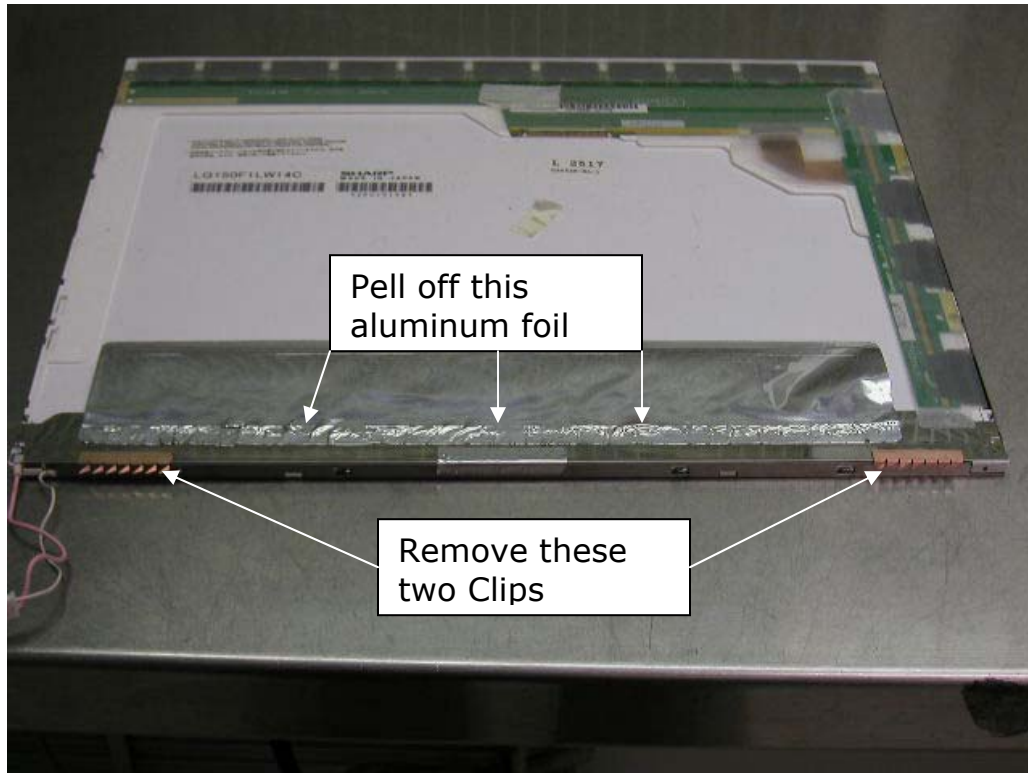


**MoniServ, Inc.**

<http://www.moniserv.com>

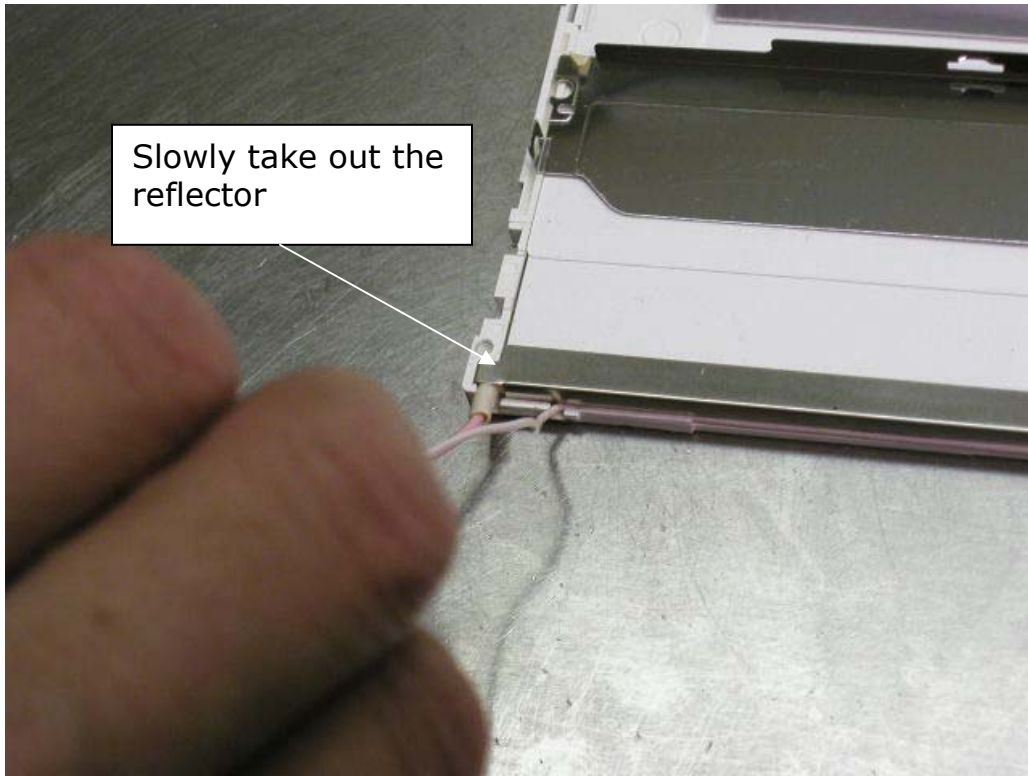
<http://www.lcdpart.com>

## Backlight Inverter Installation Procedures for Sony Vaio PCG-FXA59 with Sharp LQ150F1LW14C Panel



Remove Metal frame and set the panel face down as shown on the photo





Replace with MS20310 CCFL and install all disassembly components back