



MoniServ, Inc.

<http://www.moniserv.com>

Tools:

Philips screw driver
Small Flat screwdriver
that's all!

Preparation:

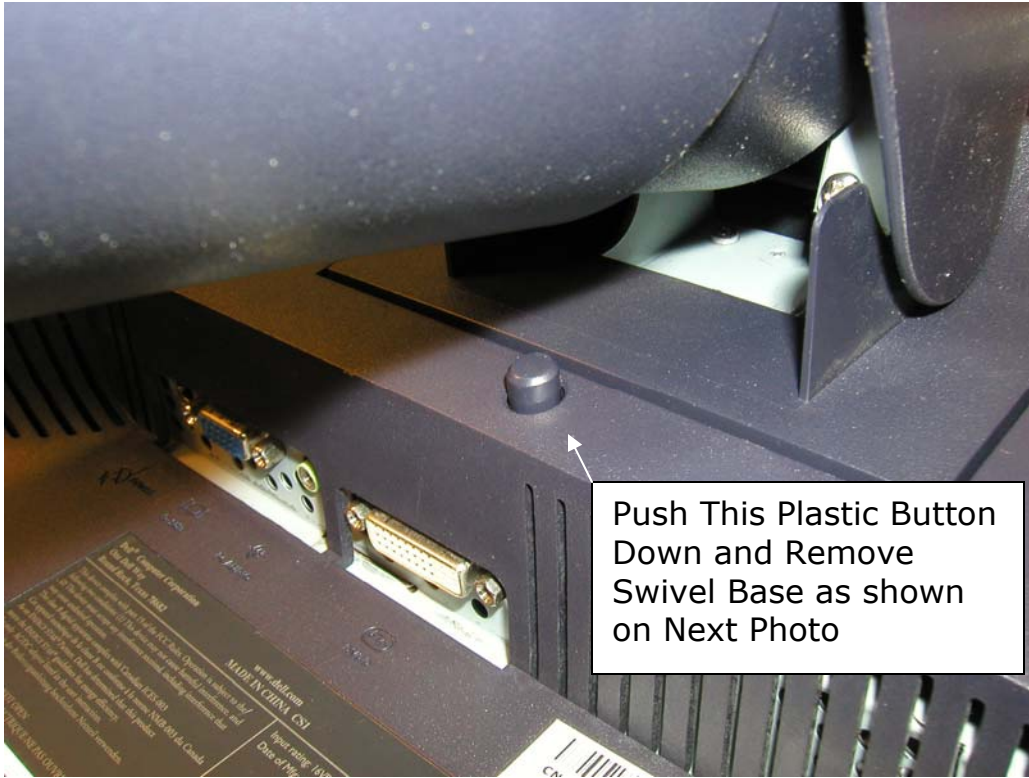
Make sure your desk is clean and you also need a piece of soft clothes because you need to place your LCD Monitor face down.

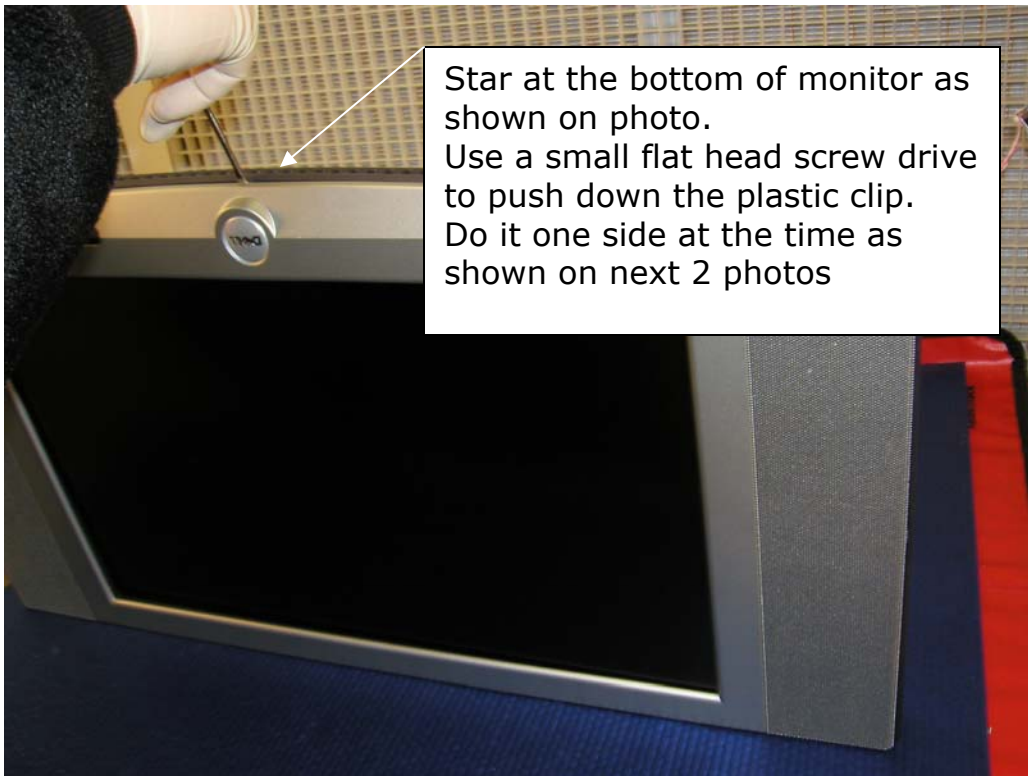
How to open the back cover:

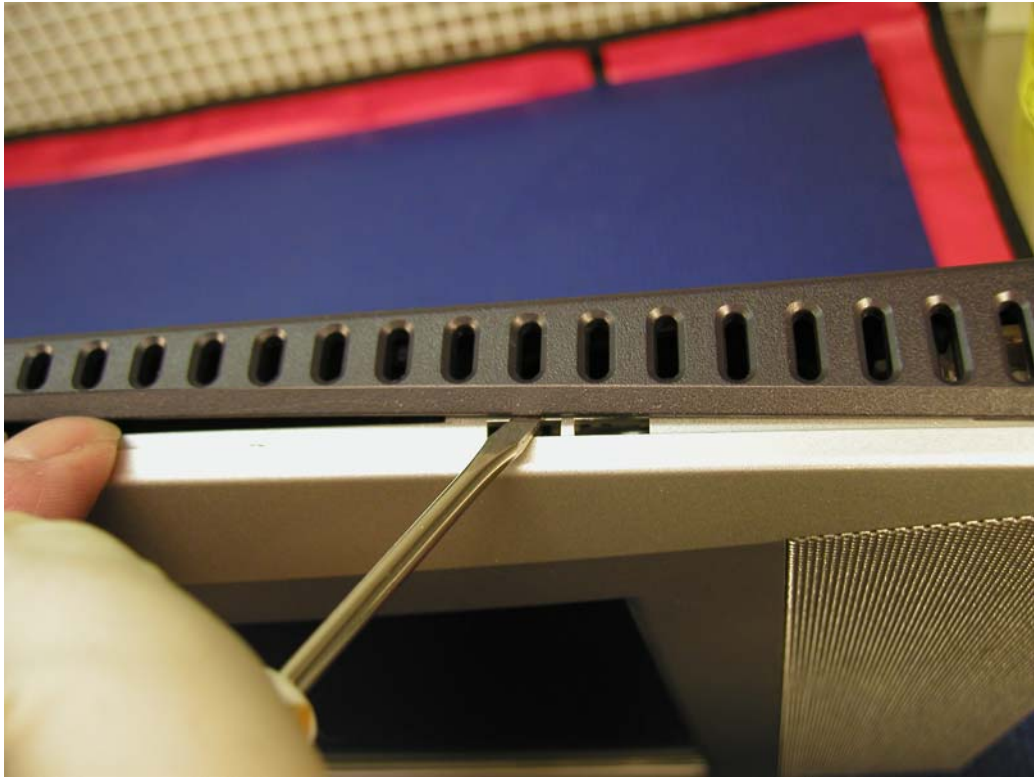
First, remove all screws on the back cover, then, use a small flat head screw driver to push down the plastic Clip inside the LCD Monitor star at the bottom of monitor. Then you can easily separate the front bezel and back cover like the photos shown below.

Backlight Inverter Installation Procedures for Dell W1700

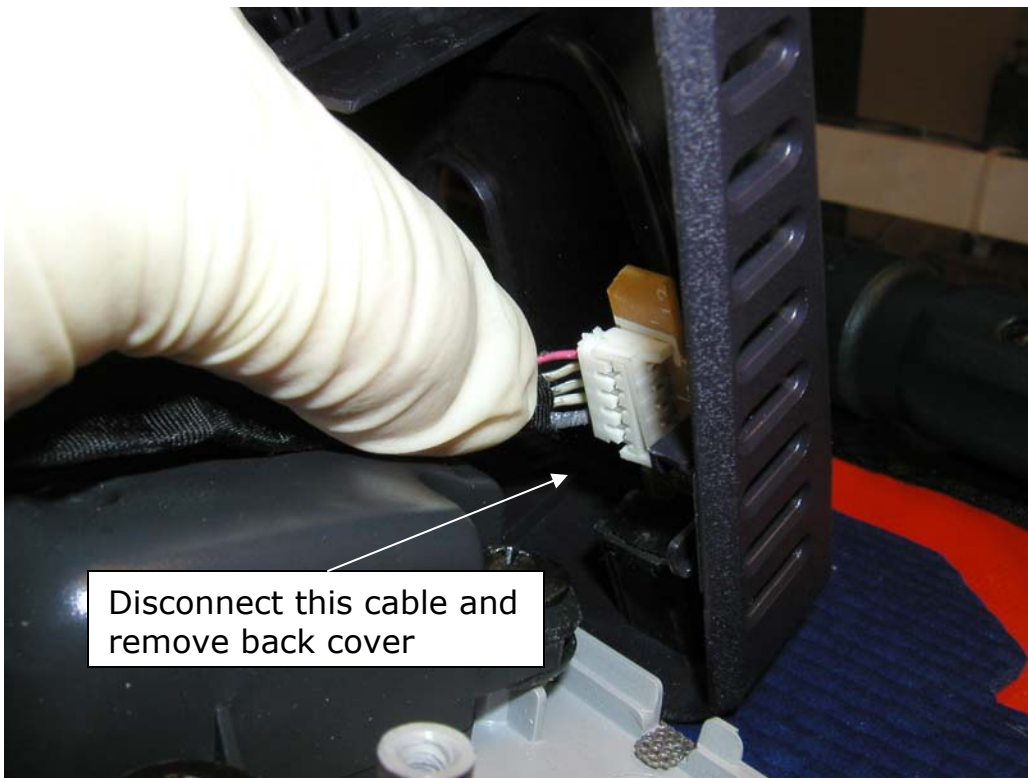
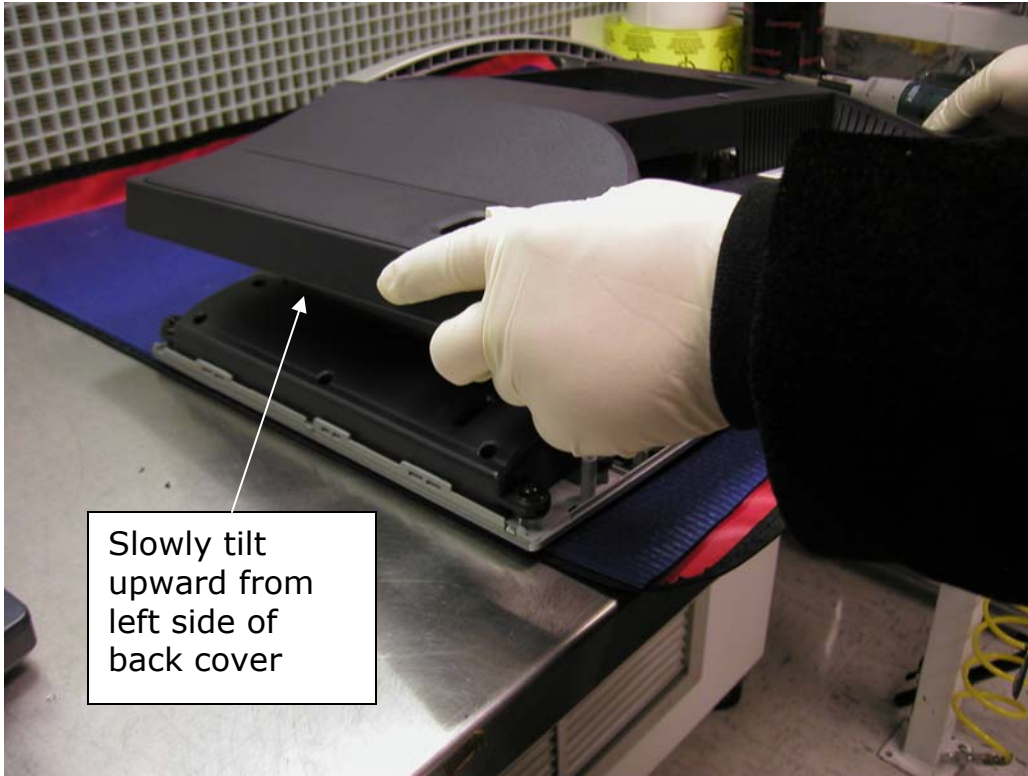


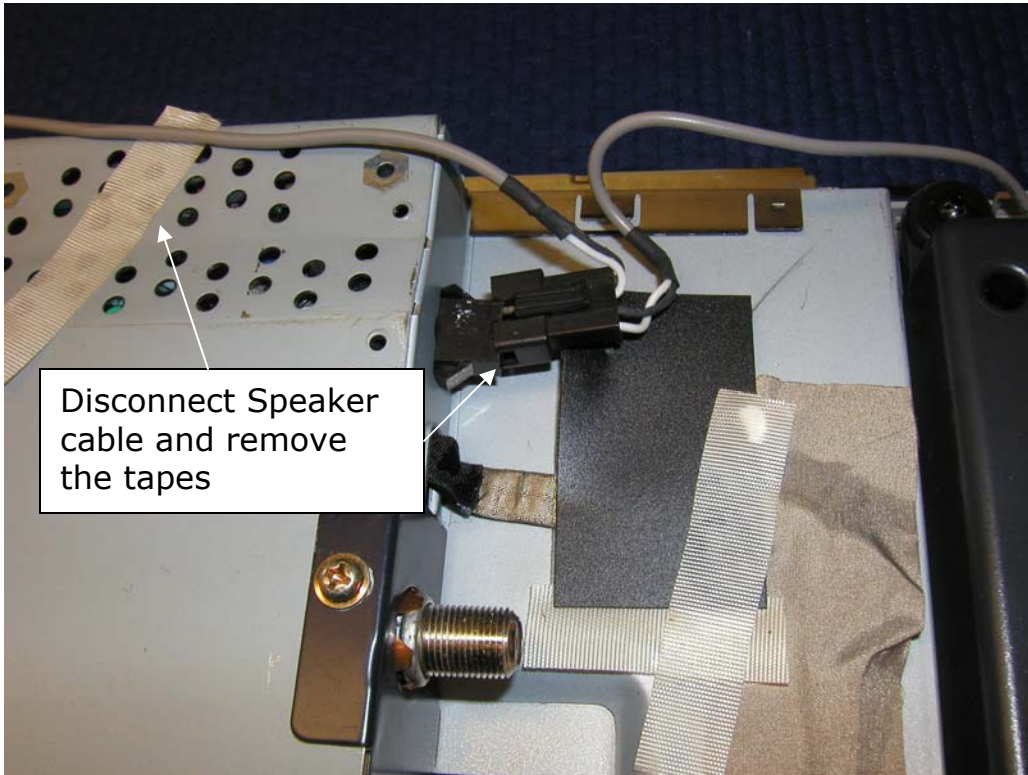
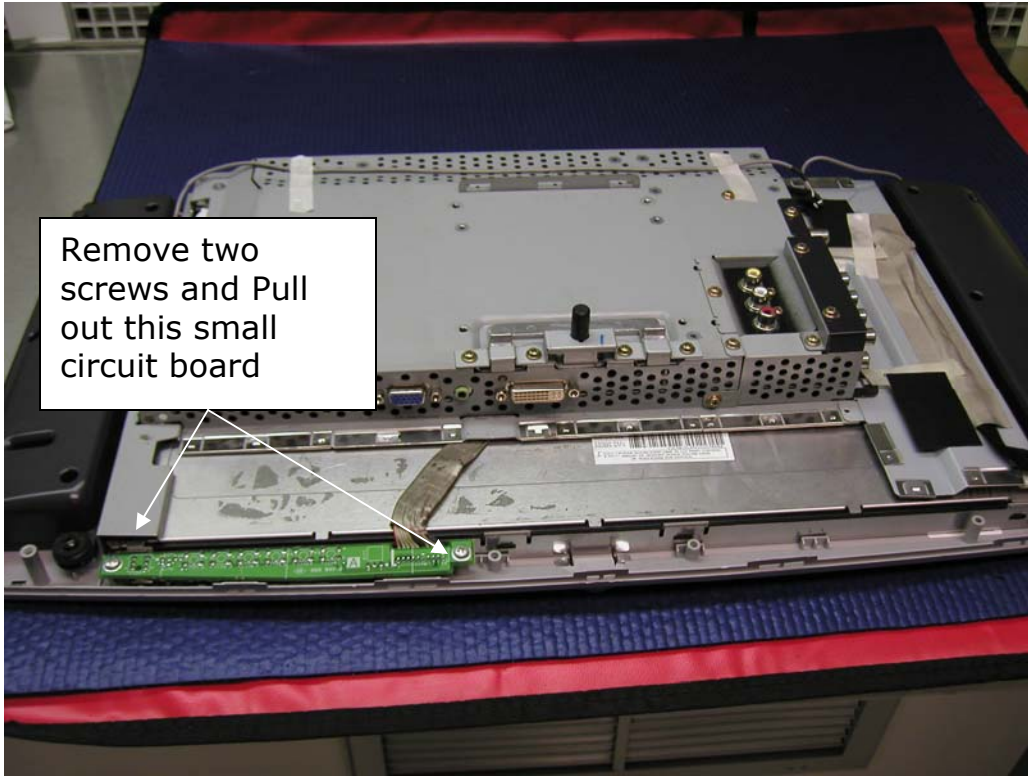


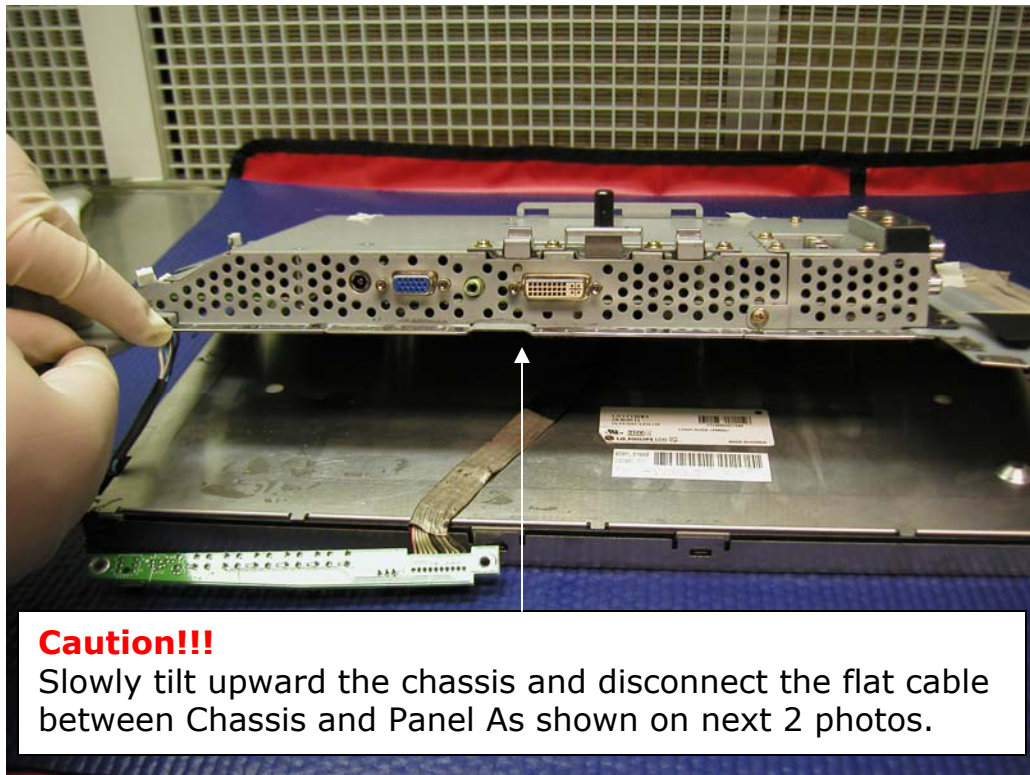
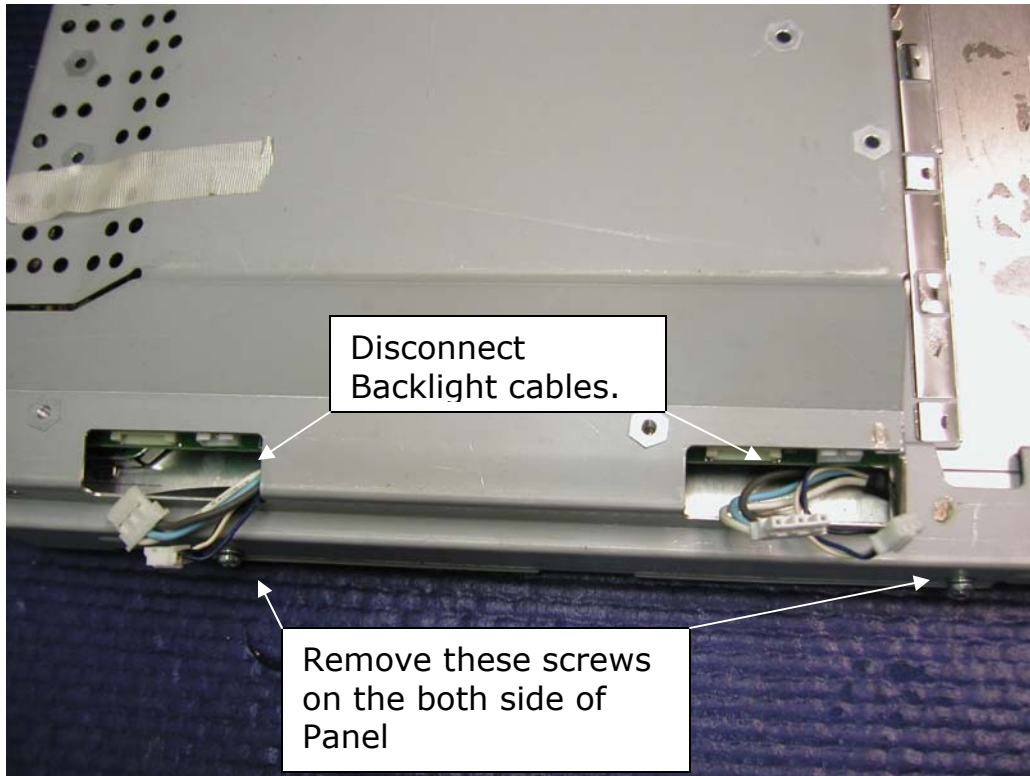


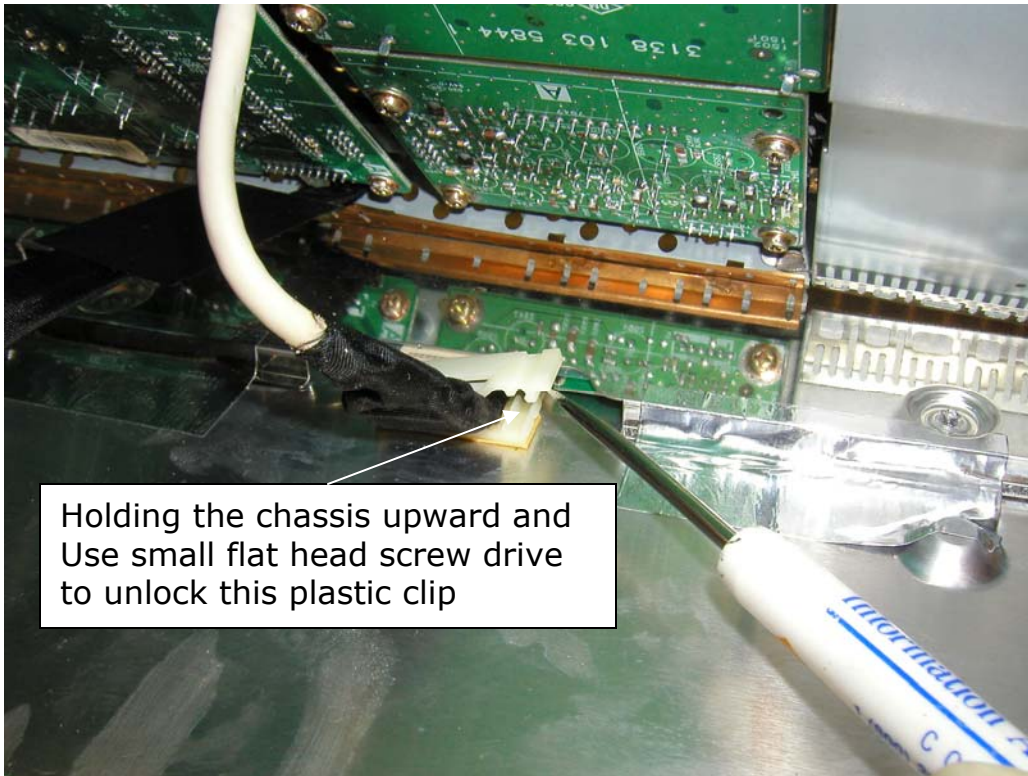


When you have unlocked all 4 sides of plastic clips, Place the monitor face down again as shown on photo

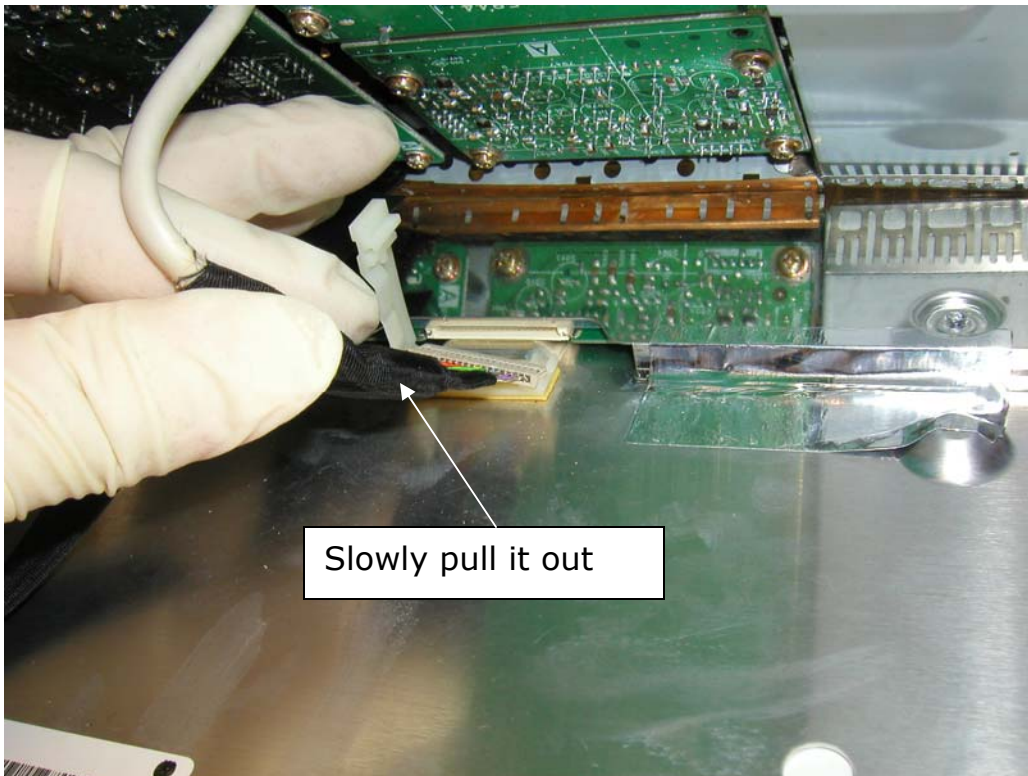




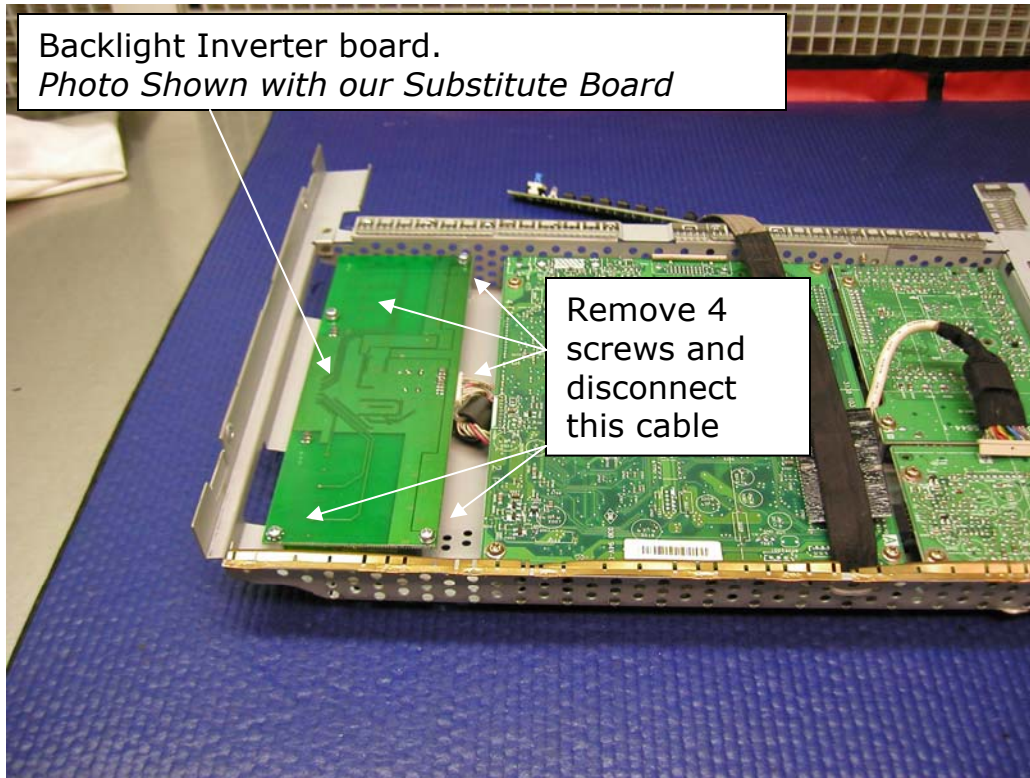




Holding the chassis upward and
Use small flat head screw drive
to unlock this plastic clip



Slowly pull it out



Remove defective inverter board and replace with our New Substitute Board (T501045.00MSS) and re-install all disassembly components back. Now your LCD Monitor working again.

MoniServ Substitute Board is available at

<http://www.lcdpart.com/Products/t50104500mss.html>